



Pinellas Education Foundation

BUILDING BRIGHTER FUTURES

2025 Impact Report



BOARD OF DIRECTORS

Bob Byelick, Chair

Pierre Caramazza, Vice-Chair

Steven W. McMullen, Treasurer

Susan Johnson, Secretary

Kim Jowell, CEO

Joseph Baker

Douglas Bishop

Josh Bomstein

Johnny Boykins

Cathy Collins

Daniel Doherty

Tash Elwyn

Mark Fernandez

René Flowers

Jennifer Galley

Bill Goede

Michael Harpole

Charles Harris

Kevin Hendrick, Superintendent

Laura Hine, School Board Chair

Mitchell Lee

Alicia McGee

Bob McIntyre

Jim Myers

Jeff Nelson

Irwin Novack

Amy Rettig

W.G. Spoor

Ellen Stavros

Danielle Weitlauf

Ben Wieder

Board Emeritus

Gary Regoli

Craig Sher

List of Directors as of November 1, 2025



A MESSAGE FROM OUR LEADERS

We are proud to share our 2025 Impact Report, a reflection of what's possible when a community comes together to invest in education. Thanks to your support, this past year marked meaningful progress in how we drive our mission and support our school district.

Last year was unprecedented, with challenges from two major hurricanes. Your generosity, combined with the support of other community partners, helped us deliver critical resources to those who needed them most, from school supplies and classroom materials to financial relief for Pinellas County Schools employees affected by the storms. Thank you will never be enough to convey what a meaningful difference this made in our community.

We engaged in a comprehensive strategic planning process to solidify our strategic pillars for the next three years. This work will guide how we invest and collaborate, ensuring that every initiative we undertake increases outcomes, strengthens schools, and prepares every student for life after high school.

As a dedicated partner in our work, we are proud to celebrate a major milestone for our district: Pinellas County Schools earned an A district grade for the second consecutive year! This is a testament to strong leadership, dedicated educators, and a commitment to excellence. We are honored to serve alongside them in advancing student achievement for all students.

As you explore this report, we hope you take pride in the stories and achievements, because none of this would be possible without your support. We are deeply grateful to everyone who has contributed to this past year of impact and outcomes. Thank you for believing in the power of education.

Together, we are building the foundation for a stronger, brighter future for our students, teachers, and our community.



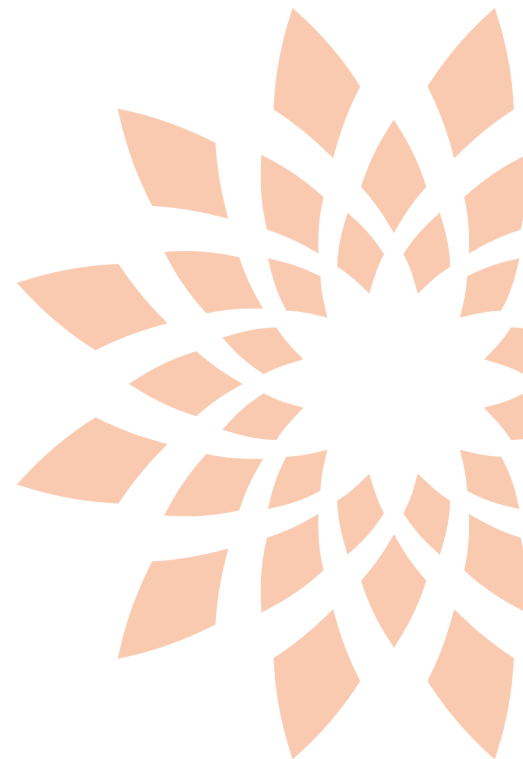
A handwritten signature in black ink that reads "Kim Jowell".

Kim Jowell, CEO
Pinellas Education Foundation



A handwritten signature in black ink that reads "Robert Byelick".

Bob Byelick, Board Chair
Pinellas Education Foundation



ABOUT US

Our work is rooted in ensuring every student achieves academic success and is prepared for life after high school. Whether pursuing higher education or skillfully joining the workforce, we provide students with the support and resources they need to reach their full potential and thrive.

We aim to be a model of excellence, demonstrating the positive impact that arises when business leaders and the community invest in education.

OUR MISSION

Our mission is to accelerate education achievement for ALL students through the effective mobilization of innovation, relationships and resources.

OUR VISION

Our vision is that every student will be prepared for life after high school, whether the choice is to attend college, to enter the workforce, or to obtain technical training.

OUR DRIVING PRINCIPLES

ELEVATING STUDENT ACHIEVEMENT

We work relentlessly to expand access and opportunity so that every student can benefit from the resources, support, and high-quality education they need to succeed.

SUPPORTING EDUCATORS AND SCHOOLS

We champion the teachers, administrators, and staff who shape students' lives because investing in them builds strong schools and thriving, sustainable communities.

LEADING THROUGH INNOVATION

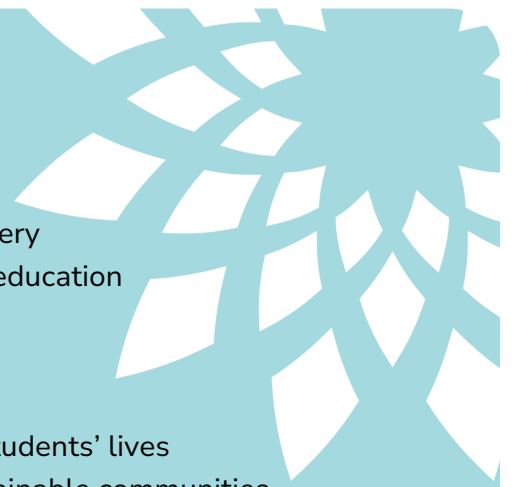
We strive to be a model of excellence and make data-informed decisions to design bold, forward-thinking programs that prepare students and our community for tomorrow.

COLLABORATING TO CREATE IMPACT

We partner with businesses and our community to multiply our impact and deliver results that matter.

COMMITTED TO SUCCESSFUL FUTURES

We help students prepare for college, technical education, or careers by supporting a variety of paths that reflect their individual goals and definition for success.



ACADEMIC ACHIEVEMENT

We focus on raising achievement levels, especially for students who need it most. We are dedicated to improving outcomes so every student can unlock their potential and thrive.



“I’M A BETTER TEACHER AND AWARE OF WHAT MY STUDENTS NEED.”

- Pinellas Early Literacy Initiative (PELI) Teacher



READY SET ALGEBRA

Launched initiative to increase the number of students who complete Algebra 1 by ninth grade.



CLOSING THE GAP

To help close achievement gaps between boys and girls, over 500 teachers received training in gender-differentiated instruction.

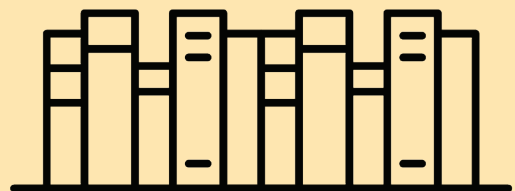


LITERACY

18 schools participate in the Pinellas Early Literacy Initiative, growing to 24 schools next fiscal year. Participating schools have seen a 21% average increase in third-grade reading scores over the past five years.

“KIDS THAT WERE PREVIOUSLY RESISTANT READERS ARE FEELING MORE OF THAT SUCCESS, SO THEY ARE GOING FOR IT, IN ESSENCE, MORE PUTTING THEMSELVES OUT THERE.”

- PELI Administrator



COLLEGE & CAREER READINESS

Our community thrives when students are prepared to take the next step—whether it is continuing their education or launching their careers—empowering a brighter future for all. That’s why we strategically invest in programs that prepare students for post-secondary education and equip them with the skills they need to enter the workforce.



\$2.5 MILLION

awarded in scholarships to students in our Take Stock in Children mentoring program



\$900,000

awarded in scholarships to Pinellas County Schools seniors



170 NEW STUDENTS

joined our Take Stock in Children mentoring program, bringing our total students served to over 1,000



16,000+ HOURS

of mentoring completed



9,099 STUDENTS

received College and Career guidance





BUILDING THE NEXT GENERATION OF HEALTHCARE HEROES

We believe in programs that build tomorrow's workforce today. Through our partnership with the Consortium of Florida Education Foundations and HCA Healthcare, we're supporting students in the medical magnet programs at Palm Harbor University High School, Boca Ciega High School, and Richard O. Jacobson Technical High School. Thanks to this generous funding, students are gaining hands-on learning experiences, from field trips like the visit to the University of South Florida pictured above to upgraded equipment and expanded industry certifications that prepare them for future healthcare careers.

TAKE STOCK IN CHILDREN AWARDS

Our Take Stock in Children team earned the prestigious "Luminary" and "Gold" Levels of Excellence awards for the 2024-2025 school year! These awards celebrate teams that go above and beyond in mentoring and college readiness coaching. From classrooms to careers, our team is helping students shine brighter than ever!



CURRICULUM ENRICHMENT

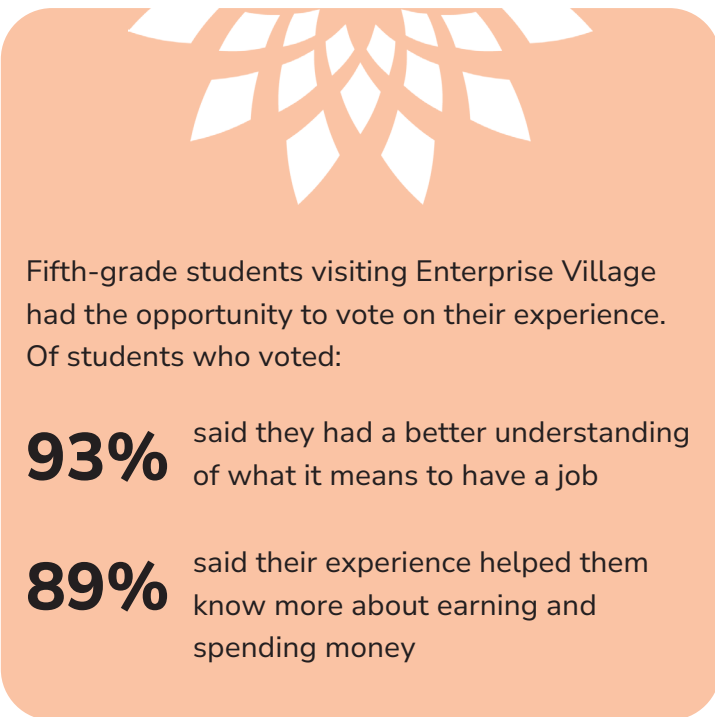
We enrich the learning experience for students and teachers by funding innovative projects and learning opportunities that are crucial to student engagement and developing essential life skills.



8,900+ STUDENTS
visited Enterprise Village



6,200+ STUDENTS
visited Finance Park



Fifth-grade students visiting Enterprise Village had the opportunity to vote on their experience. Of students who voted:

- 93%** said they had a better understanding of what it means to have a job
- 89%** said their experience helped them know more about earning and spending money

EMPOWERING EDUCATORS

When educators are supported, students can excel and reach their full academic potential. We celebrate teachers' achievements and provide essential classroom resources to help them deliver high-quality instruction.



\$60,000

in school supply
donations received



20 SCHOOLS

received supplies for
highest-needs students



\$110,000

awarded in innovative
classroom grants



CELEBRATING TEACHERS OF THE YEAR

Each year, we honor the extraordinary teachers who inspire, lead, and shape the minds of future generations. From a luncheon celebrating every school's Teacher of the Year to a special dinner recognizing the top ten finalists, we proudly celebrate the dedication and excellence of educators across Pinellas County.



Dennis Zuercher, Gibbs High School, was named the 2025 Pinellas County Schools Teacher of the Year.



HURRICANE RELIEF

Thank you for making a meaningful difference when our community needed it most. Your generosity provided vital resources to help our students, teachers, and schools recover from Hurricanes Helene and Milton.



\$1.6 MILLION

dedicated to Hurricane Relief recovery



1,600 STUDENTS

received school supplies



102 TEACHERS

received materials for damaged classrooms



632 PCS EMPLOYEES

provided with \$1.2 million in financial assistance

This is just one of many heartfelt thank you notes we received, made possible by your generous support during a critical time of need.

Thanks to your donors and partners, my husband and I were able to purchase much needed furniture to replace what we lost in the back to back storms. After living in 3 hotels and 2 campers for the last 2 months you can imagine how exciting it was to buy our own mattress and bedroom furniture. Your generosity is greatly appreciated.



OUR GENEROUS DONORS

It's through the generosity of our community that our work is possible.

Thank you to our 2024-2025 donors and partners!

The list reflects gifts given between July 1, 2024 - June 30, 2025.

\$500,000+

Anonymous
Consortium of Florida Education Foundations
Raymond James Financial, Inc.

\$250,000 - \$499,999

Helios Education Foundation
Bob McIntyre
Take Stock in Children, Inc.
U.S. Department of Education

\$100,000 - \$249,999

Richard P. Austin*
Community Foundation of Tampa Bay Inc.
DITEK/McIntyre Family Foundation
Duke Energy Foundation
Jacarlene Foundation
Richard O. Jacobson Foundation, Inc.
Lightning Foundation, Inc.
Kevin & Jeanne Milkey
The Estate of Audrey J. Richmire
Suncoast Credit Union Foundation+
United Way Suncoast
Volunteer Florida
Dr. Jeffrey S. Walker

\$50,000 - \$99,999

Achieva Credit Union
David Berolzheimer Foundation
Clearwater For Youth
Kiwanis Club of St. Petersburg
David & Wendy Nelson
Rays Baseball Foundation+
Rotary Club of Tarpon Springs
Star Kids Foundation, Inc.
The Ryan Wells Foundation

\$25,000 - \$49,999

Aetna
Agora
Bank of America
Beth Dillinger Foundation, Inc.
Clear Channel Outdoor+
The Dunedin Rotary Club Foundation
Egasti Family Fund

Tash & Emily Elwyn
Franklin Templeton Investments
J. Crayton Pruitt Foundation, Inc.
Hugh McPherson
The Noren Foundation
Pinellas County School Board
Publix Super Markets Charities, Inc.
RaceTrac, Inc.
The Rick & Amy Smith Charity Fund
Vinik Family Foundation
Vision Financial Group, Inc.

\$10,000 - \$24,999

A.D. Morgan Corporation
Achieva Foundation
Aegon Transamerica Foundation
Ajax Building Company
Anonymous
Ellen Stavros
B&I Contractors, Inc.
Better Business Bureau of West Florida, Inc.
Kasia Catherman
City of St. Petersburg+
Crown Automotive Charities
Crown Automotive Group+
Duke Energy Florida
Florida Philanthropic Network
Foundation for a Healthy St. Petersburg, Inc.
Frances & Richard Cummins Charitable Foundation, Inc.
Jabil Cares Foundation
Ann Myrece & George William James
Johns Hopkins All Children's Hospital
Junior Achievement of Tampa Bay, Inc.
Kiwanis Club of Seminole
Koozie Group+
Lake Michigan Credit Union
Level 6
Lockheed Martin
Marsh & McLennan Agency
Max F. & Al Jeane Beach Foundation
Minnreg Veterans Association
Moyer Law Group

Pinellas Association of School Administrators
Pinellas County Solid Waste
Pinellas Suncoast Transit Authority
Public Service Education Foundation of Pinellas Park, Inc.
Public Works Training Institute
Heidi Ann & John Rhodes
Safety Harbor Chamber of Commerce
The Sembler Company
Think Big for Kids
Thomas A. & Mary S. James Foundation
Van Middlesworth & Company, P.A.
YMCA of the Suncoast+

\$5,000 - \$9,999

William & Judith Anderson
Anonymous+
Astro Skate of Brandon
Astro Skate of Tarpon Springs+
BayCare Health System
Philip & Marilyn Benjamin Family Philanthropic Foundation
Bergoffen Family Foundation
Bloomin' Brands+
Robert & Barbara Byelick
Catalina Marketing Charitable Foundation
Chick-fil-A+
City of Clearwater
Clearwater Jazz Holiday Foundation
Coastal Properties Group
Cathy & Paul Steven Collins
Community Foundation of Sarasota County
Creative Contractors Inc.
CVS Health
Derek Teele Foundation, Inc.
Ronald & Susan Diner Philanthropic Fund
First Horizon Foundation+
Chuck & Nancy Frazier
Great Explorations Children's Museum



Hepner Architects
Houser Family Foundation
JE Dunn Construction
Junior League of St. Petersburg
JVS Contracting, Inc.
Kahwa Coffee+
KnowBe4
Mitch Lee & Linda Miller
Joseph Liberatore
Alice H. Nisk
NOPE of Pinellas
Dr. James T. Pascia, D.D.S.
Pinellas Community Foundation
Pinellas County Sheriff's Office
Bill & Jean Pingleton
Power Design
Ron Jon Worldwide, Inc.
Rotary Club of Gulf Beaches
Sabal Trust Company
Scripps Howard Foundation
St. Petersburg College
Foundation+
Tampa Bay Buccaneers+
TD SYNEX
Travelers
Upper Tampa Bay Education
Foundation
USAmeribank Foundation
Valley Bank
Visit St. Pete / Clearwater+
Wahnetah Moffatt Fund
Wharton-Smith, Inc.
The White Family Foundation

\$2,500 - \$4,999

Ajax Paving Industries, Inc. of
Florida
Associates Agency, Inc.
Molly & Brian Auld
Bay Area Manufacturers
Association
Bencor, Inc.
Beta Omega Chapter of Delta
Kappa Gamma
Deviny Boese Foundation
Pierre & Gina Caramazza
Larry Carbonelli
City West Church of Christ
Jack & Mary Critchfield
Cyndi Olmstead LLC
Delta Sigma Theta Sorority, Inc.
Clearwater Alumnae Chapter
Eckerd Credit Union
George & Kim Feaster
Fidelity Brokerage Services LLC
Flagship Bank

Fleischman Garcia Maslowski
(FG+M) Architecture
Jennifer Galley
Andrew Harris Fund
Harvard Jolly Architecture
Huddle Tickets
J & K Electric Inc.
Jabil
Kim & Sean Jowell
The Fanny Katzaras Trust
The Largo Lions Foundation, Inc.
Long & Associates Architects /
Engineers, Inc.
Mascap Dealer Holdings LLC
Jim & Melissa Myers
National Aviation Academy
Michael Petagna
Phi Beta Kappa Alumni Association
of Tampa Bay
Phillies Charities
Rotary Club of Seminole
Rotary Club of Seminole Lake
Charitable Foundation
Shutts & Bowen, LLP
Corrie & William Stover
Temple Beth El of Boca Raton, Inc.
Vyuha Inc.
Williamson Design Associates

\$1,000 - \$2,499

A.W. Windhorst Lodge No. 185
Alan Everton Insurance, Inc.
Alta Construction Equipment
Florida, LLC
Amuni Financial, Inc.
Anonymous (2 donors)
Beaudry Family Fund
Beesley Electric LLC
Josh & Lindsay Bomstein
Brandon Construction Company
Robert Hadley Brehm, MPH
Buell Electric, Inc.
Kenneth Caple
Central Florida Contractors
The Cooley Family Foundation
D'Andrea Electric, Inc.
Mozell Davis
Delta Sigma Theta Sorority - St.
Petersburg Alumnae Chapter
DEX Imaging, Inc.
Cheryl DiCicco
Di'Mond Electric Corporation
Directed Capital, LLC
Daniel & Laurie Doherty
Jennifer Dull
Holly Duncan

Erwin Electric, Inc.
Everything Electric LLC
Deborah Factor
Christine Federowich
Ferguson Waterworks
FloridaMakes, Inc.
Wendy & Dave Gattis
Geographic Solutions, Inc.
GFWC North Pinellas Woman's
Club Foundation, Inc.
James B. Gill
James & Emily Gillespie
Gold & Diamond Source+
Larry & Dawn Graner
Group O
Guignard Company
H.H. Pizza
Jim & Jean Hamilton
Hancock Whitney Bank
Hand Arendall Harrison Sale LLC
The Hardwick Family Fund
Highway Safety Devices
Laura & Hank Hine
Carolyn & J.R. Houston
hrEdge Consulting
Hurricane Football Booster Club of
Palm Harbor
J & L Sanchez, Inc.
Courtland & April James
Juice Habit
Libby K. Kay Educational
Foundation
Kokkinidis Electric LLC
Largo Woman's Club
Lawrence & Kay Leahon
Linder Industrial Machinery
Company
Live Wire Electrical Services, Inc.
Laura Lizer & Associates, Inc
Eileen & Robert Long
The Longley Group
Melissa & Chris Lostraglio
Marine Corps League Sgt Walter P
Ryan Detachment
Denise A. Masterson
Carol & John* McCarthy
The McMullen Family Charitable
Fund
Todd & Raegan Miller
The Military Order of the World
Wars - Clearwater Chapter
Mike Molinari
Ronald* & Kathy Mounts
The Mudra Foundation
Navy Federal Credit Union
Beverly & Timothy Nehls



Jeffrey & Deborah Nelson
 Netchex
 John & Mariann Neu
 Nielsen
 Jill Olmstead
 PalAmerican Security, Inc.
 Palm Harbor University High
 School
 Palm Harbor University High
 School PTSA
 Nancy Palvino
 PDQ+
 Pinellas Education Organization,
 Inc.
 The Pinellas Park Art Society
 Piper Fire Protection
 Prairie River Middle School
 Preferred Materials, Inc.
 Nancy & Jeffrey Preising
 PrimeGroup Insurance
 Pro Signature America, Inc.
 Publix Super Markets, Inc.
 Renker Eich Parks Architects, Inc.
 Jeff & Amy Rettig
 Ring Power Corporation
 Rotary Club of Clearwater
 Rotary Club of Indian Rocks Beach
 Rotary Club of Largo
 Rowe Architects
 Leslie & Nermine Rubin
 Phillip Russell
 Betsy Schweitzer
 Karen M. Seabury
 Craig & Jan Sher Philanthropic
 Fund
 Steven & Barbara Shepard
 Shiloh Ministries, Inc.
 Spencer Associates Architecture
 Spiezle Group, Inc.
 W.G. Spoor, II
 Star Electric Services, Inc.
 Mark D. Stavros
 Katharine Strange
 Renae & Kyle Strozier
 Stuart Angelo & Company, P.A.
 Sunrise Rotary Foundation, Inc.
 Sweet Sparkman Architecture &
 Interiors
 Tampa Bay Rowdies+
 The Darcy & John Rowell
 Foundation
 Tarpon Springs Fundamental
 Elementary PTA
 Temple Ahavat Shalom
 Anne Todia
 Nicholas Tornatore

Samantha Trebesch
 Trevino Electric, Inc.
 John L. Usher
 Valk Family Foundation
 Vortex Companies
 John Waechter
 Wannemacher Jensen Architects,
 Inc.
 Weather Chek Electric, Inc.
 Windsor Elementary School
 Yarbrough Electric, Inc.
 YMCA of Greater St. Petersburg
 Florida, Inc.
 Zyscovich

\$500 - \$999

The AERO Group
 Anonymous (3 donors)
 Art Guild, Inc.
 Stefana Avara
 Aveda Institute Tampa Bay+
 Bellwether Beach Resort+
 William D. Berry, ABR, CRS
 William Blocher
 Terry & Teresa Boehm
 Kenneth Bollenback
 Dawn Castro
 Charity Fund of Infotect Design
 Solutions
 Katherine Cheezem
 Clearwater High School Class of
 1982
 Cole Electrical Contractors LLC
 Comfortable Care Dental
 C. Christopher Comstock
 Congregation B'nai Israel of St.
 Petersburg
 CTS Towing & Transport, Inc.
 Edward & Pasqua Dziadul
 Cynthia & David Ehrenzeller
 Empowering Communities, Inc.
 Enstar Group
 Ezell Electric, LLC
 Bruce & Eileen Geer
 Patricia Ann Grubb
 Sarah Walker Guthrie
 Michael & Shavonne Harpole
 Kevin & Melissa Hendrick
 His & Hers Limousines+
 Susan & David Johnson
 K12 Coalition+
 Kiwanis Club of Safety Harbor
 Mindy & Louis LaGrande
 Levine Family Fund
 The Livable Planet Fund of Gulf
 Coast Community Foundation

Melissa & Derrick Lyons
 Mackay MD & Associates LLC
 Brian Martin
 The Masterson Family Foundation
 Microsoft
 Dragana Milic
 Gladys Moon
 The Morris Family Fund
 Northeast Underwriters
 Orange Grove Elementary PTA
 Paula Pearson
 Pinellas Classroom Teachers
 Association
 The Plug Electric
 Prosun International
 Race Roster
 Marion Rich
 Naomi Rutenberg & Robert Burn
 Fund
 Sandpearl Resort & Spa+
 Paula Schneider
 Johanna V. Silva
 Skycrest Animal Hospital
 Mark Smith
 Solar Source Institute
 George M. Stone, Sr.
 T-Mobile Fiber
 Trenam Law
 Joan M. Vecchioli
 Vinoy Resort & Golf Club+
 Joanne & Ed Zinski Charitable Fund

\$250 - \$499

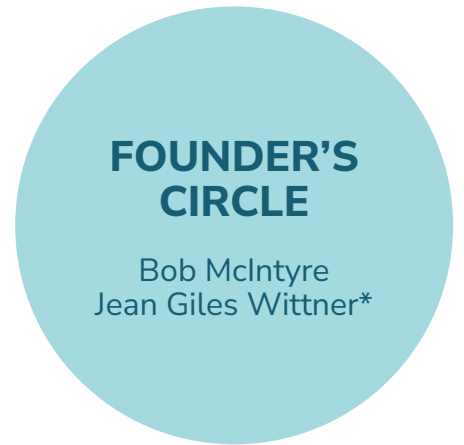
3D Cloud
 Paul & Devon Alsobrook
 Robert & Celeste Andrews
 Anonymous (2 donors)
 Michael Arndt
 William Averyt
 Balfour & Co.+
 Richard T. Banks
 Patricia Barris
 Beachcomber Beach Resort+
 Belleair Country Club
 Stephen Benjamin
 Bethlehem Seventh-Day Adventist
 Church
 Courtney Boerker
 Cynthia Boothe
 Wilbur Brewton
 Mark Chilvers
 Kelvin J. Clark
 Marcelline Ann-Marie Clarke
 Consolidated Electric LLC
 Kelly H. Dean
 Dr. Tien Do



Dunedin Electric Co., Inc.
 Christy Dunn
 East - West Electric, Inc.
 Encon, Inc.
 Bob & Joy Estes
 Robin F. Fairbanks
 Bernice & William Fitts
 FLA Electric & Design, Inc.
 Force Electric, Inc.
 Judith & C.N. Foster
 Jason Fowler
 Freedom Boat Club+
 Kenneth & Linda Fullerton
 GenerX Generators LLC
 Jenny Gonzalez
 John & Beth Goodgame
 Google
 Guzman & Company
 Heidi Hardy
 Hart Middle School
 Tyna Hartwell
 Lorri Helfand
 Tammy Himes
 Laura Hoefl
 Roger Hopper
 Jane Hunt
 JA Electrical Services LLC
 Dondra Jacobs-Shultz
 John Foster Electric Company, Inc.
 Susan & David Johnson
 Annette Kaplan Charitable Fund
 Aceela Kaif
 Kendra Karagozian
 Dale Lawson
 Linda S. Lerner
 Livingston Electric, LLC
 Magda E. Lopez
 William Berry Lyons
 Mak Electric LLC
 Anna Marrali

Cesar Martinez-Leandro
 Lori Matway
 Maynard Electric
 Sean & Shauna McCredie
 McVeigh Family Fund
 Meares Plumbing, Inc.
 Paul Mitchell
 Suzanna Molino
 Morton Plant Mease Health Care
 Foundation
 Ashley L. Mosley
 Jeff Moss
 Cassandra Murphy Atkins
 North Pinellas County Retired
 Educators Association
 P3 Solutions LLC
 Parr Elementary School
 Pinellas Generator & Electric LLC
 Robin Pitchford
 Kimberlee Ramos
 Raz Electric, Inc.
 Joseph Reed
 Eric Richter
 René Robinson-Flowers
 Russo FAS Electrical Services
 Kelly Sarmanian
 Lindsey A. Shank, CIC
 The Shirley Proctor Puller
 Foundation
 Lawrence & Deena Silver
 Cheryl Stacks
 STAYAWHILEwithus
 Daniel Sultan
 Deborah Swink
 Tampa Bay Lightning+
 Nia Mae Tantish
 Wallace Welch & Willingham, Inc.
 Ann J. Welsh

THE STAVROS SOCIETY



The Stavros Society, honoring our founder Dr. Gus A. Stavros and his wife Frances, is an annual giving program that supports the Foundation's goals to accelerate academic achievement and fuel educational innovations.

Brian & Molly Auld
 Robert & Barbara Byelick
 Jack & Mary Critchfield
 Jennifer Dull
 Holly Duncan
 Tash & Emily Elwyn
 Wendy & Dave Gattis
 Kim & Sean Jowell
 Mitch Lee & Linda Miller
 Melissa & Chris Lostraglio
 Jim & Melissa Myers
 Nielsen
 Bill & Jean Pingleton
 Jeff & Amy Rettig
 Craig & Jan Sher
 Ellen Stavros
 Mark Stavros

YOUR LEGACY. THEIR FUTURE.

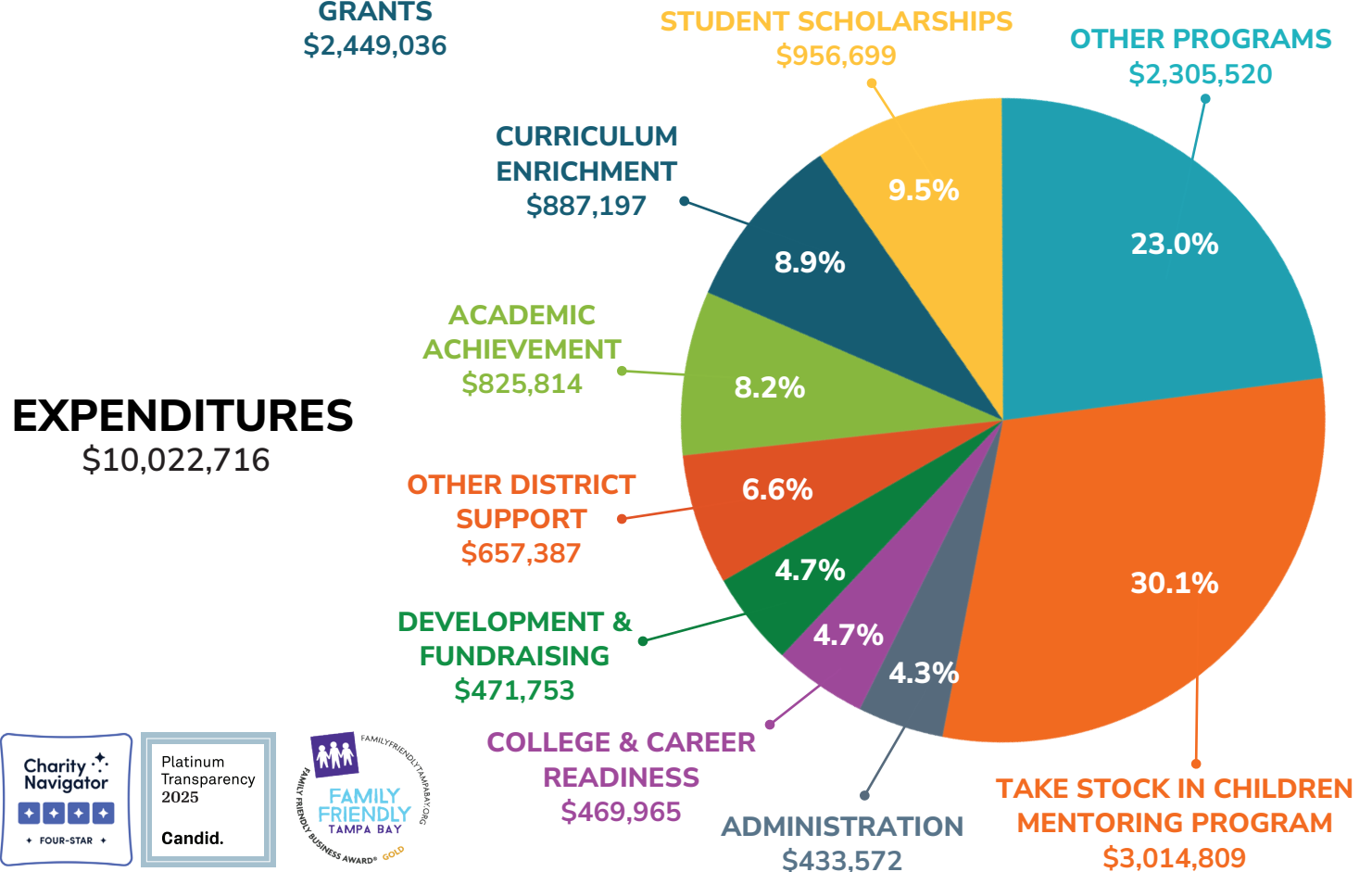
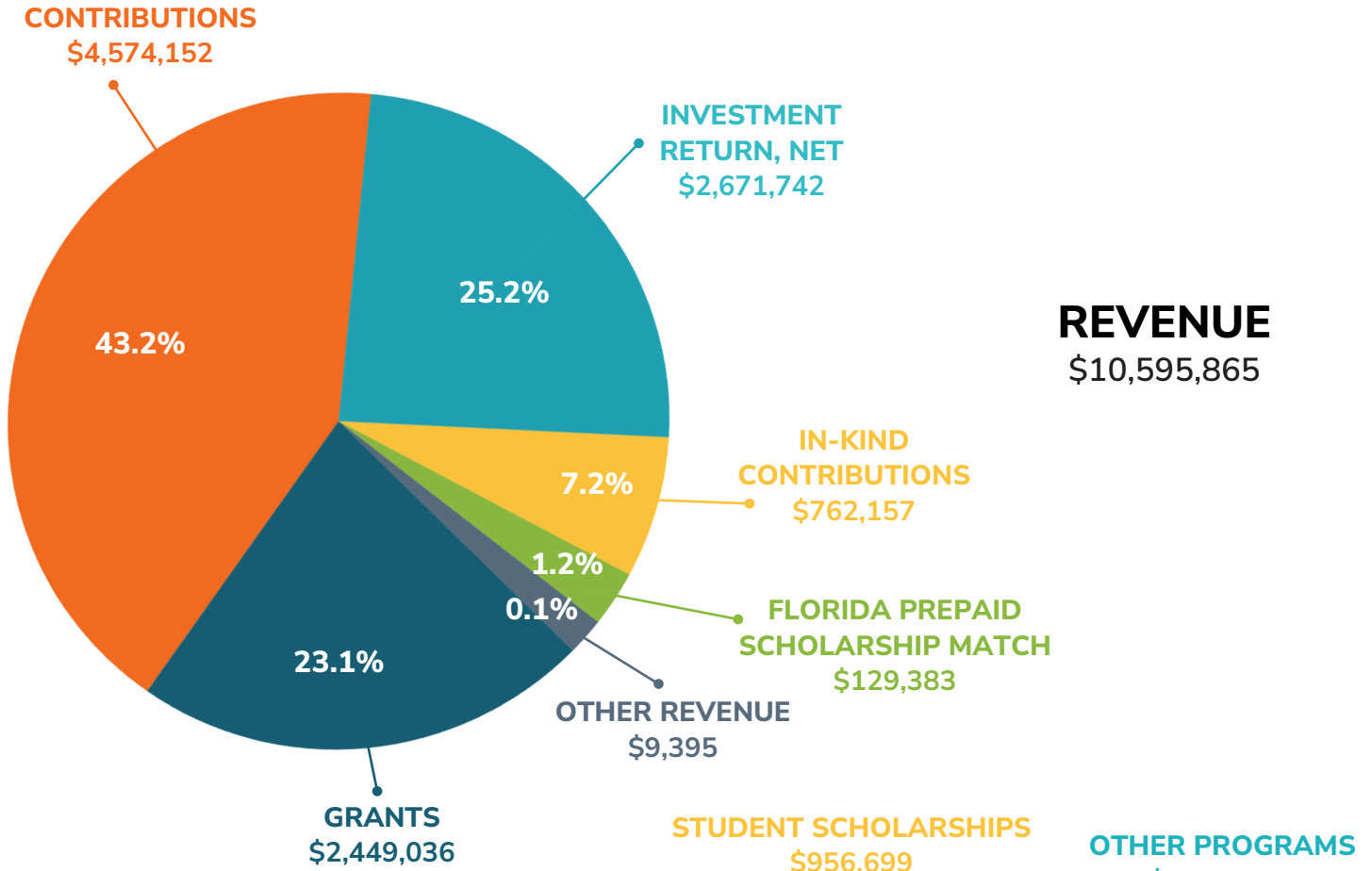


With thoughtful gift planning, you can create a legacy of learning that inspires future generations and leaves a lasting impact.

Scan the QR code to learn more.



REVENUE AND EXPENDITURES





Pinellas Education Foundation

12090 Starkey Road
Largo, Florida 33773
727-588-4816
pinellaseducation.org

NON PROFIT
U.S. POSTAGE
PAID
PERMIT #7974
TAMPA, FL



STAY CONNECTED TO SEE YOUR IMPACT ALL YEAR



@PinellasEducation



@PinellasEd



@PinellasEducation

Subscribe to our
newsletter